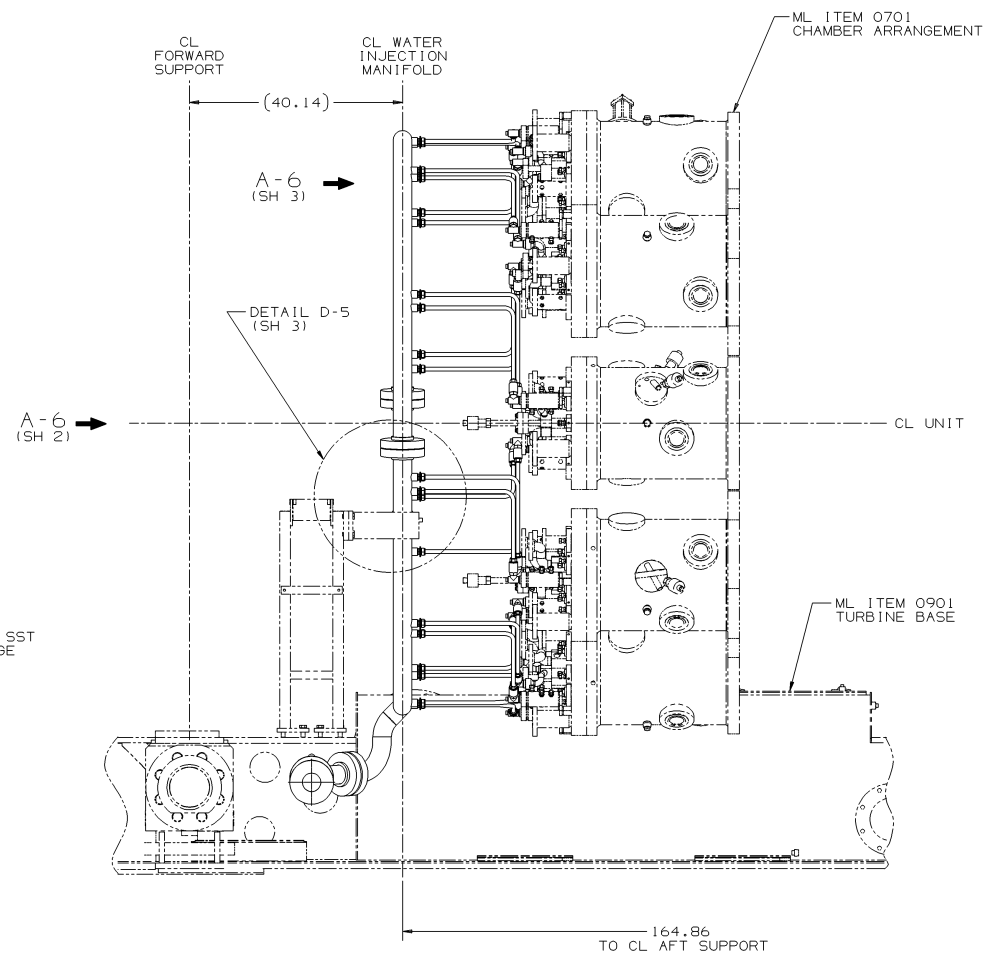


1. GENERAL MACHINING APPLIED PRACTICES ARE PER 348A9200.
2. PIPING APPLIED PRACTICES ARE PER 351A3700.
3. PIPING WELDS ARE PER P8A-AG3, FILLER MATERIAL IS PER COLUMN AE-L UNLESS OTHERWISE SPECIFIED IN THIS DOCUMENT.
4. STRUCTURAL WELDS ARE PER P8A-AG1, FILLER MATERIAL IS PER COLUMN AB UNLESS OTHERWISE NOTED.
5. INSTALL AND SUPPORT TUBING PER 215A4435.
6. INSTALL TUBE UNIONS AS REQUIRED.
7. TUBE RUNS ARE ILLUSTRATIVE ONLY.
8. CLEAN AND PAINT PER ML ITEM 0108.
9. FLOW DIRECTION IS DESIGNATED WITH AN ARROW SYMBOL.
10. VCK8-1 THRU 10 CORRESPOND TO COMBUSTION CHAMBER NUMBER 1 THRU 10 RESPECTIVELY & VCK8-11 THRU 20 CORRESPOND TO COMBUSTION CHAMBER 1 THRU 10 RESPECTIVELY. CHECK VALVES ARE TO BE INSTALLED IN THE DIRECTION OF THE ARROW.




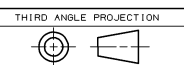
(G1) LOWER BASE

6	INSTR, CLN & PNT	ML ITEM 0108
5	INSTR, ASSY-TUBE & FTG	2154A4435
4	WELDING-GENL SPEC	P8A-AG1
3	WLD FAB OF GTRB PP	P8A-AG3
2	APLD PRAC, PP	351A3700
1	APLD PRAC, GENL MACH	348A9200
IT.	NOMENCLATURE	IDENT
LIST OF COMPLEMENTARY DOCUMENTS		

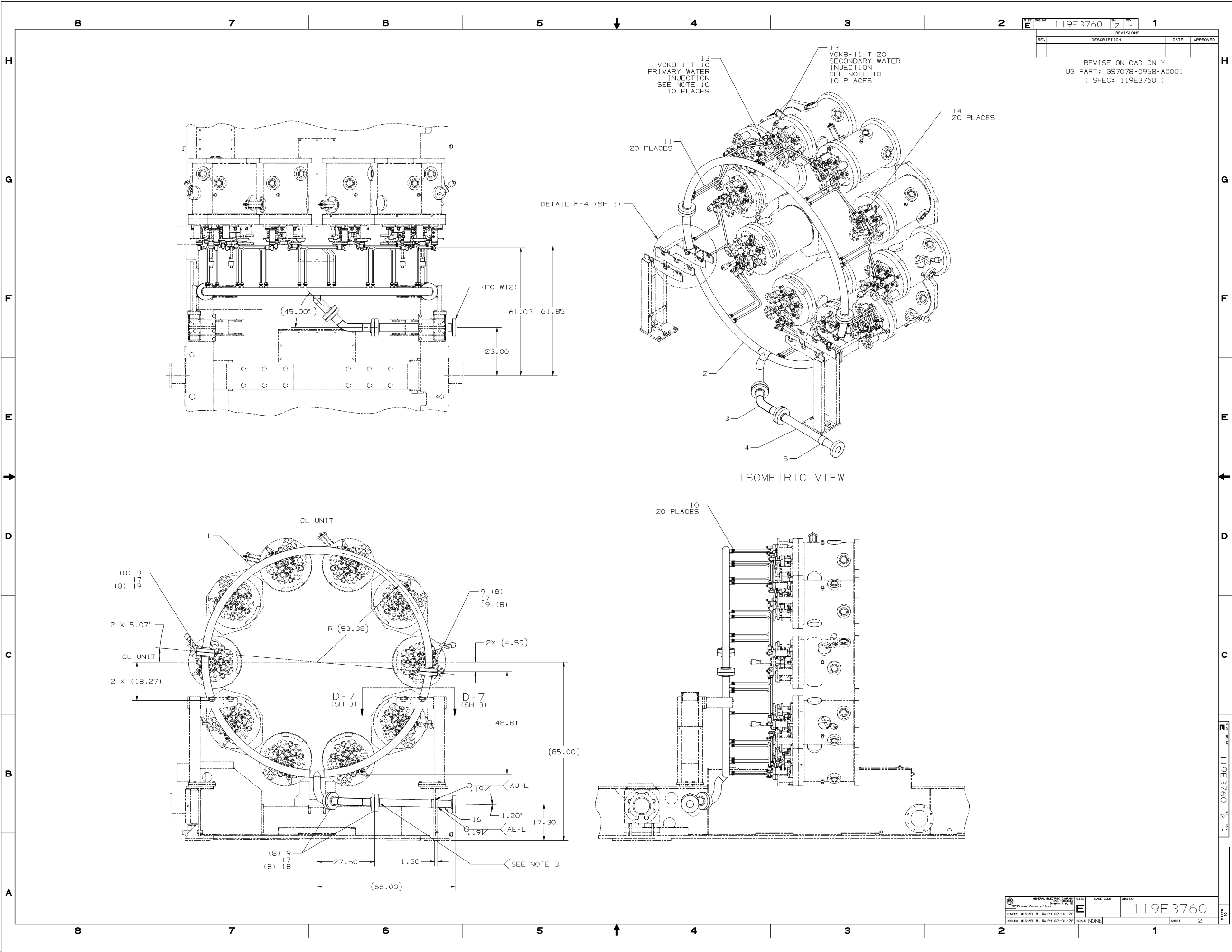
—	—	—	REV	REV STATUS OF SHEETS
3	2	1	SH	

BOM ISSUED

UNLESS OTHERWISE SPECIFIED	SIGNATURES	DATE	 GE Power Generation GENERAL ELECTRIC COMPANY 099001174 / SC
DIMENSIONS ARE IN INCHES	DERBY MICHAEL S., RALPH	02-01-28	
TOLERANCES ARE:			
2 PL DECIMALS ± .01	DAVID J. TRAYLOR	02-01-28	
3 PL THOUS ± .005	ENRIQUE CHARLIE J., MENTA	02-01-28	
ANGLES ± .5°			
FRACTIONS ± .001	THOMAS MICHAEL B., RALPH	02-01-28	
	RALPH J. J. J. J.	02-01-28	
APPLIED PRACTICES 348A9200			PIPING AIR WATER INJECTION FIRST MADE FOR ML-7A1P6A1-16 0958 119E3760 DATE CODE DWG NO SCALE NONE SHEET 1 119E2204

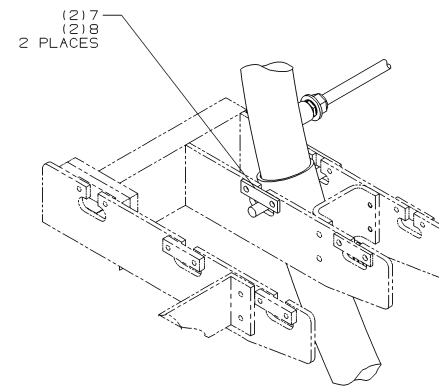


DT-1N

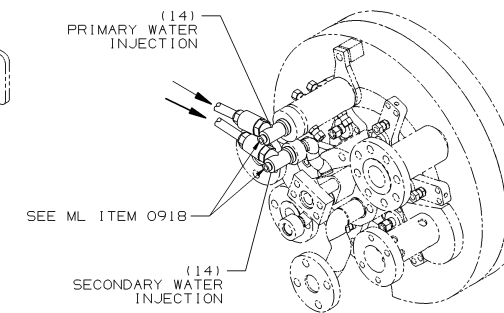


SIZE	OWS	HD	SH	REV	1
E	119E3760		3	-	
REVISIONS					
REV	DESCRIPTION			DATE	APPROVED

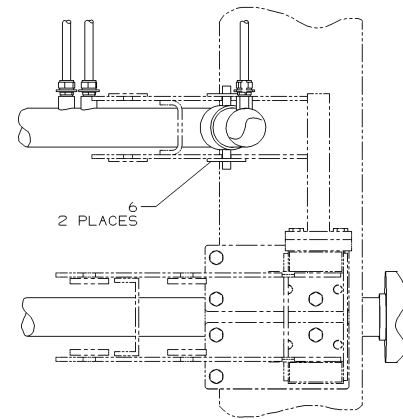
REVISE ON CAD ONLY
UG PART: GS7078-0968-A0001
(SPEC: 119E3760)



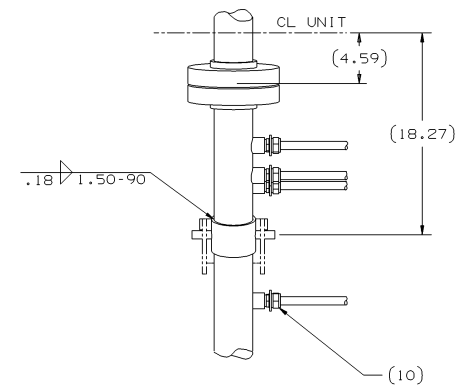
DETAIL F-4 (G-5 SH 2)
(2 PLACES)



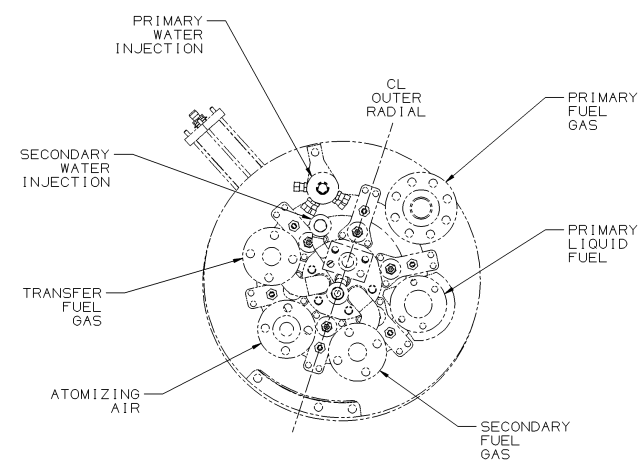
DETAIL F-2 (E-2)
10 PLACES



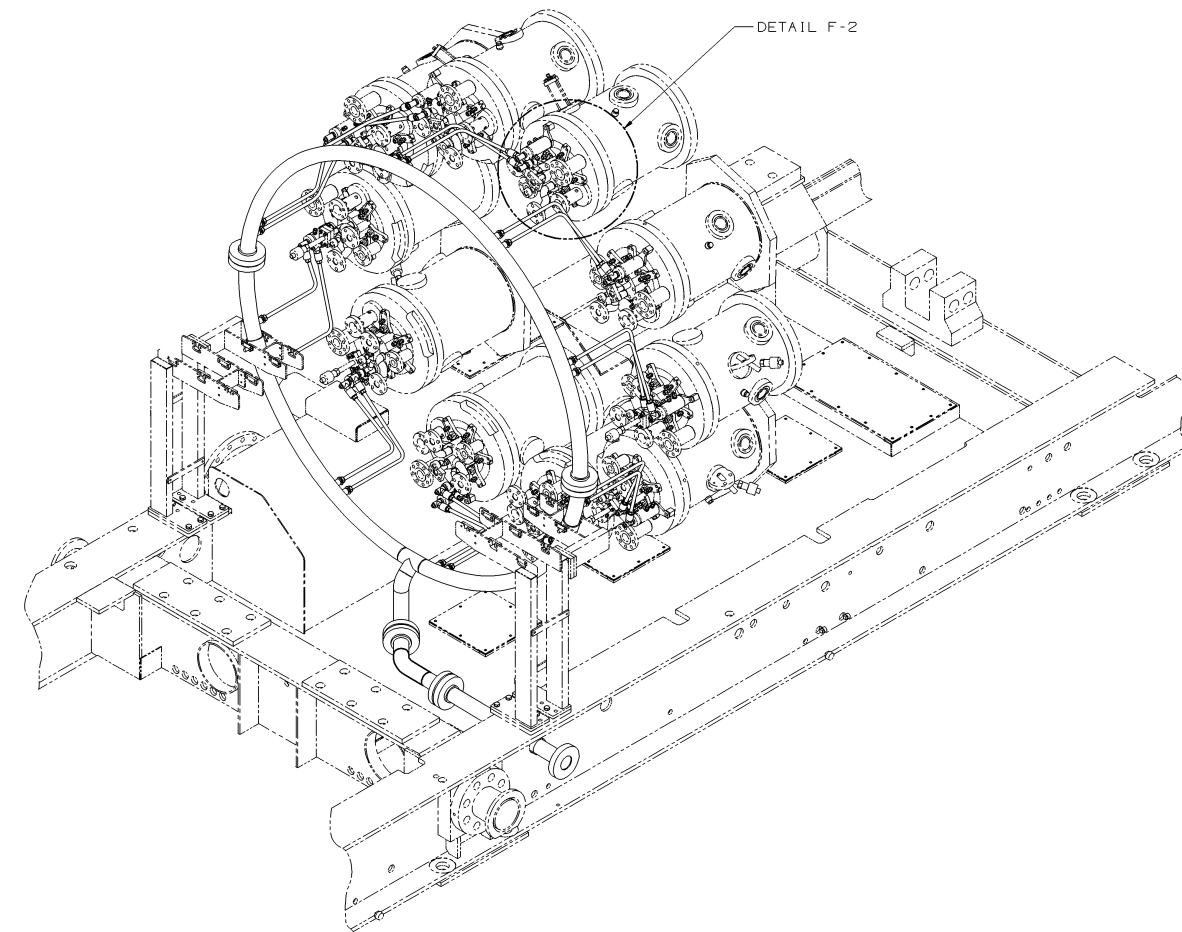
SECTION D-7 (C-5 SH 2)
2 PLACES




DETAIL D-5 (E-4 SH 1)
(2 PLACES)



VIEW A-6 (E-4 SH 1)
ENLARGED



ISOMETRIC VIEW

 GENERAL ELECTRIC COMPANY AND TURBINE Greenville, SC	SIZE	CAGE CODE	DWG NO
	E		119E3760
DRWN MICHAEL B. RALPH 02-01-28			
ISSUED MICHAEL B. RALPH 02-01-28	SCALE NONE		SHEET 3